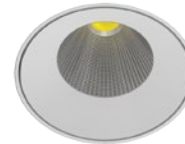


Group in catalogue: DOWNLIGHT LUMINAIRES

220-240V
50/60 HzIP
20

Downlight luminaire suitable for installation in plasterboard ceilings. The luminaire is available in a round version with different angles of light distribution.

TECHNICAL DATA**Mounting:** in the ceiling, with mounting frame (included)**Body:** aluminum**Colour:** white, black**ELECTRICAL DATA****Power supply efficiency:** 92%**Power:** 220-240V 50/60Hz**Includes light source:** yes**Type of equipment:** ED**OPTICAL DATA****Electrical connection:** max 2x1,5 mm² wire**Light distribution:** rotationally-symmetric**Way of lighting:** direct**Reflector:** polished faceted**ULOR / DLOR:** 0/100**GENERAL DATA****Lifetime (L80B10):** 60 000 h**Warranty:** 5 years**Application:** public utility facilities, delicatessen, supermarkets, shopping centers, offices, car showrooms, pathways, halls, classrooms, corridors, flats

Code	Colour	Luminaire power [W]	Lumen luminaire [lm]	Efficacy [lm/W]	Colour temperature [K]	CRI/Ra	Operating temperature range [°C]
030551.5L01.4XX	white	14	1200	86	3000	≥80	0 ... +40
030551.5L02.4XX	white	14	1250	89	4000	≥80	0 ... +40
030551.5L03.4XX	white	21	1800	86	3000	≥80	0 ... +40
030551.5L04.4XX	white	21	1900	90	4000	≥80	0 ... +40
030553.5L01.4XX	black	14	1200	86	3000	≥80	0 ... +40
030553.5L02.4XX	black	14	1250	89	4000	≥80	0 ... +40
030553.5L03.4XX	black	21	1800	86	3000	≥80	0 ... +40
030553.5L04.4XX	black	21	1900	90	4000	≥80	0 ... +40

030551.5L01.4

Bezel colour	Beam angle
1 <input type="checkbox"/> white	1 18°
3 <input checked="" type="checkbox"/> black	2 28°
4 <input type="checkbox"/> silver	3 34°
5 <input type="checkbox"/> gold	5 55°

Luminous flux tolerance +/- 10%.

Power tolerance +/- 5%.

Lighting beam, light intensity distribution and light efficiency were examined in accordance with the EN ISO 17025:2005 norm for EN13032 norm series and the LM-79 norm.

Up-to-date product info and General Warranty Terms available on our website www.luglightfactory.com

Detailed information on luminous fluxes and powers for individual indexes are indicated on the product data sheet.

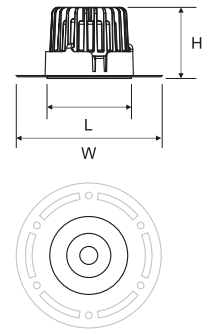
The parameters in the data sheet are given for Ta=25°C.

INTO R100 LED TRIMLESS

Group in catalogue: DOWNLIGHT LUMINAIRES



Code	Dimensions [mm] L W H	Mounting dimensions [mm] ØS	Pallet quantity	Quantity in package	Net weight [kg]
030551.5L01.4XX	80 140 70	90	360	1	0.5
030551.5L02.4XX	80 140 70	90	360	1	0.5
030551.5L03.4XX	80 140 70	90	360	1	0.5
030551.5L04.4XX	80 140 70	90	360	1	0.5
030553.5L01.4XX	80 140 70	90	360	1	0.5
030553.5L02.4XX	80 140 70	90	360	1	0.5
030553.5L03.4XX	80 140 70	90	360	1	0.5
030553.5L04.4XX	80 140 70	90	360	1	0.5



OTHER PICTURES

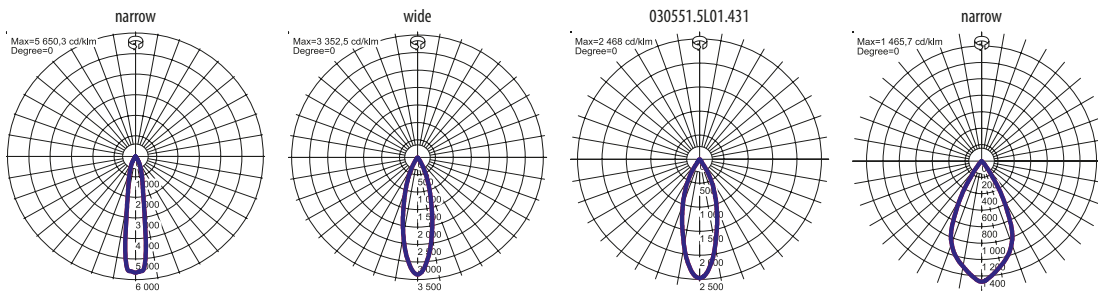


finalist
of the competition

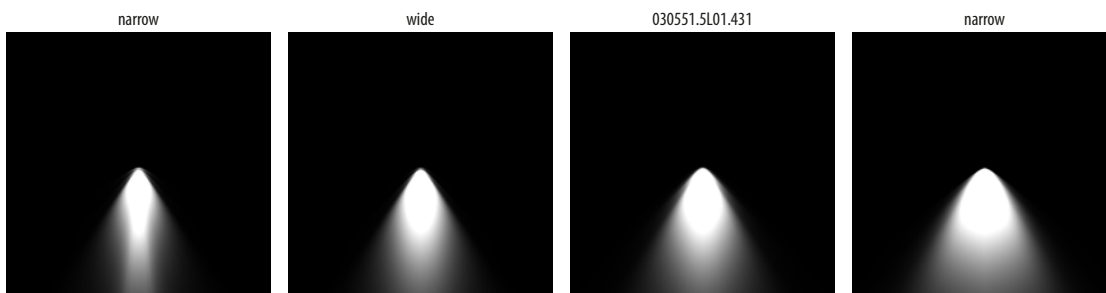


2020

LIGHT BEAM CURVES



WAY OF LIGHTING



Luminous flux tolerance +/- 10%.

Power tolerance +/- 5%.

Lighting beam, light intensity distribution and light efficiency were examined in accordance with the EN ISO 17025:2005 norm for EN13032 norm series and the LM-79 norm.

Up-to-date product info and General Warranty Terms available on our website www.luglightfactory.com

Detailed information on luminous fluxes and powers for individual indexes are indicated on the product data sheet.

The parameters in the data sheet are given for Ta=25°C.